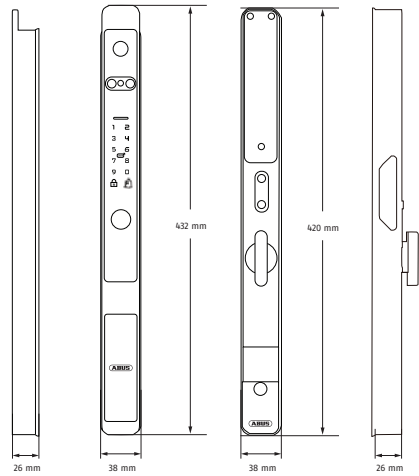
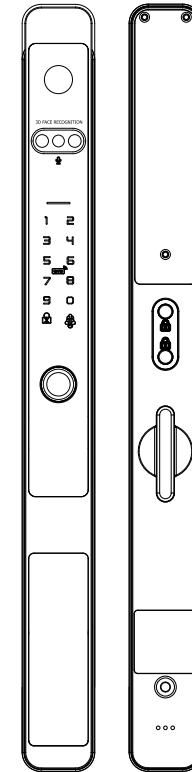


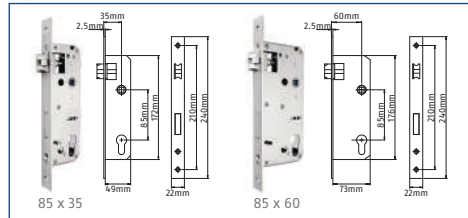


Smart Lock

User manual



Option



A93 10/30 Half Cylinder



3200mAh Li-Ion Battery

A11 Automatic Smart Door Lock

- Lock Dimension: 432mm(H) x 38mm(W) x 26mm(T)
- Door thickness: 35 - 50mm
- Material: Aluminium Alloy, Tempered Glass
- Unlocking Way: Fingerprint, Password, Mechanical Key, APP, 3D Facial Recognition, IC Card
- Power Supply Method: 3200 mAh Lithium Battery
- Working Temperature: -10~60°C
- Working Humidity: 45%~90%
- Working Voltage: 7.4V
- Networking Method: WiFi
- Face Capacity: 100
- Fingerprint Capacity: 100
- Fingerprint Sensor Type: Capacitive Sensor
- Fingerprint Reader Resolution: 508dpi
- Fingerprint Collection Range: ±180°
- Refusal Rate: <0.1%
- False Recognition Rate: <0.001%
- Card Type: M1
- Keypad Type: Touch Sensor
- Battery Life: 4-6 Months
- External Emergency Power Supply: Type-C



3D Facial Recognition	Low-Power Prompt
Fingerprint Unlock	Doors hinges on left side
Password Unlock, OTP (One-Time Password)	Doors hinges on right side
Mechanical Key Unlock	Anti-Drill Protection
IC Card Access	KA - Keyed Alike MK - Master Key System
Anti-Dismantling Alarm	Mobile Apps Unlock

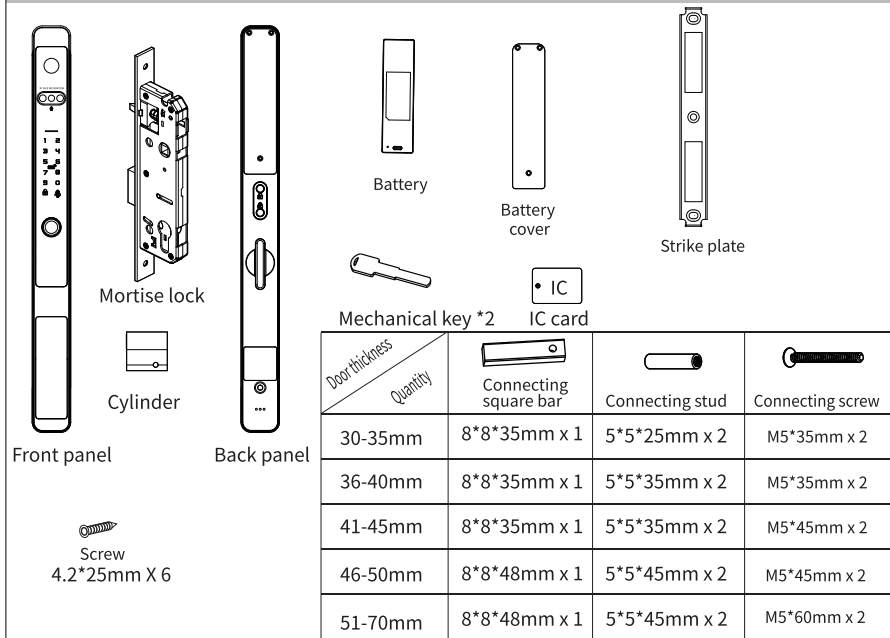
IC card	Password	Mechanical key
APP	3D face recognition	Fingerprint

* To connect to the Internet, must purchase the version with Tuya WiFi function
Scan the QR code below to download the APP

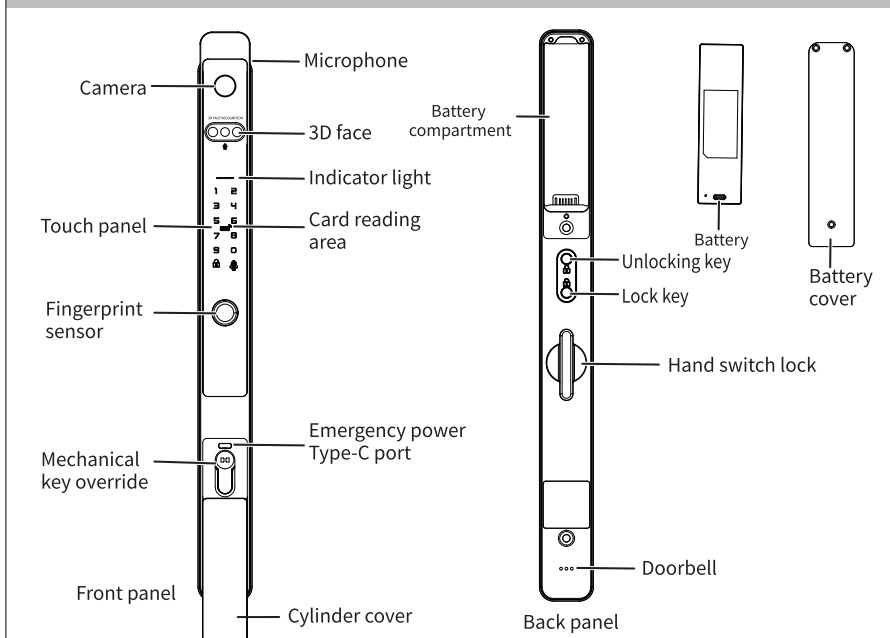


Search on the mobile app market or the Apple Store "Tuya Smart" or "Smart Life"

Accessories



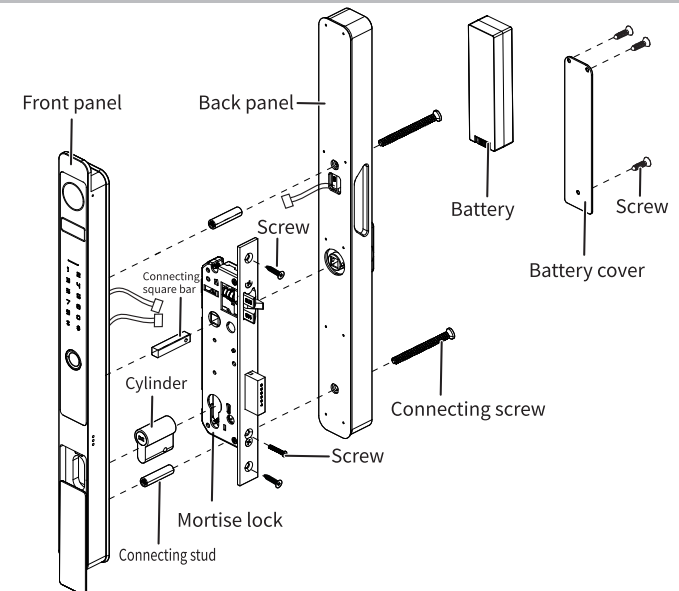
Product overview



Specification

Item	Technical Parameters
Power supply	DC7.4V (lithium battery)
Under voltage prompt	<DC6.8V (±0.2V)
Emergency Power Supply	5V (USB)
Quiescent Current	<150uA(average value)
Dynamic current	<2A(average value)
Network	StandardWi-Fi
Remote control	10米
Motor	Support 8V standard motor
Keyboard	12key
	Light color: White
NO. of administrators	9 PCS
NO. of users	291 PCS
Fingerprint capacity	100 PCS
Face capacity	100 PCS
Card sensing distance	0~20mm
Working temperature	-10°C~60°C
Working humidity	45~90%RH

Installation guide



Information and Safety Warnings:

1. introduce

This user manual will introduce the functions and usage of this smart lock. It is important that you follow the instructions and note all comments that appear in this manual.

Please refer to this manual before attempting to use this lock. If you have any questions not answered in this manual or require unconventional service, please call our customer service line or send us a FAQ.

2. Safety warning:

▲ When reading this manual, pay attention to the following notes . notes must be read and followe it to prevent injury or damage to the lock.

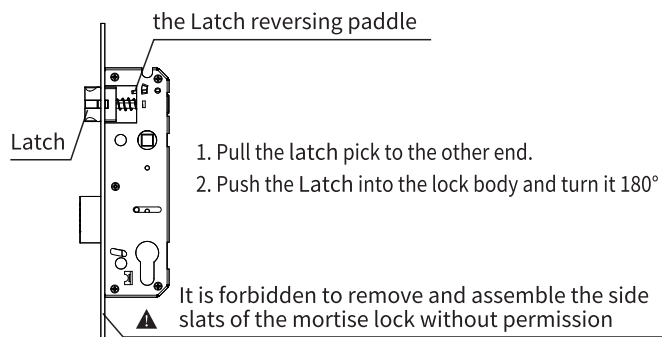
▲ Common usage:

- * This lock can only be used in the manner described in this manual.
- * All parts of the inspection lock are included. If any parts are missing, please contact our service staff.
- * There is a protective film on the front touch screen. If there is a scratch on the protective film, please remove the protective film when necessary.
- * Please use the special lithium battery for this lock, do not use other batteries that do not meet the specifications. As described in this manual, do not leave batteries outside items are inserted into the lock.
- * Before starting installation, please ensure that all surfaces are flat, mounted on the door or have any type of defects such as gaps or warping, The lock may fail or become completely inoperable.
- * Do not apply any detergent directly to any part of the lock. When cleaning, only use clean water or mild cleaner in soft non - grind clean on the cloth.
- * Locks must be used with theTuya APP. The lock works without an APP, but only when using an app can realize the complete function.

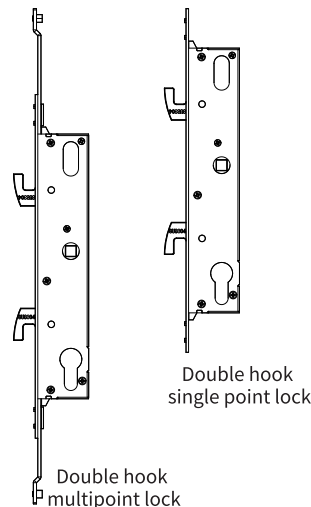
3. Terms of Sale and Service

- * Please read the instructions carefully before use!
- * 1 year electronic warranty.
- * This product comes with a 1-year limited warranty on electronic parts. Limited warranty on mechanical and surface quality against defects in materials and workmanship under normal use. Proof of purchase and ownership is required for the warranty to take effect.
- * Please feel free to contact us for any errors or problems in our manual or after sale terms. ,
- * We are not responsible for compensation or free maintenance for damage caused by human factors or unavoidable causes. Please check our after-sales service terms.
- * Non-technical personnel do not remove the lock at will. If necessary, please operate under the guidance of technical personnel.
- * Note: The product picture may be slightly different from the actual product, please refer to the actual product.
- * After replacing the battery, please do not discard it at will. Please return the battery to the recycling station to avoid environmental pollution!

Double deadbolt mortise lock internal and external conversion



The sliding door can be equipped with double hook mortise lock



Precautions before installation

1) Do not use too much force during installation to avoid damaging the door lock.



2) Wear glasses when drilling to protect your eyes.



3) Use the correct installation tools.

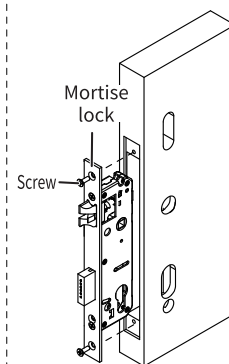


4) Drill holes on both sides of the door to avoid damaging the door panel.

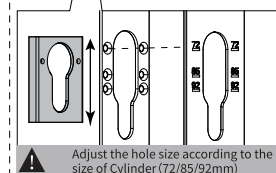
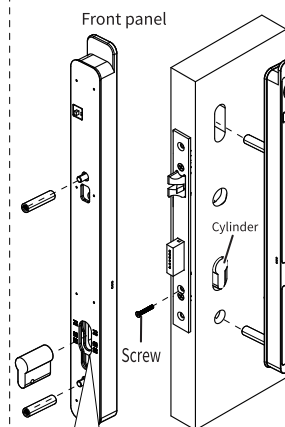


Installation steps

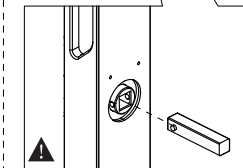
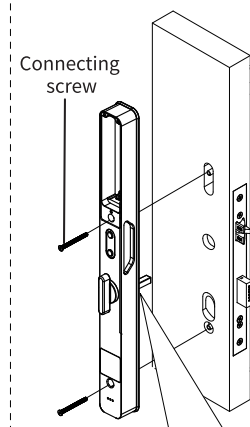
1. Install mortise lock



2. Install the front panel

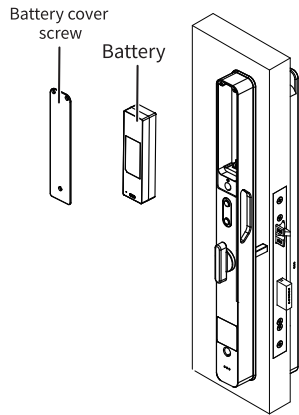


3. Install the back panel

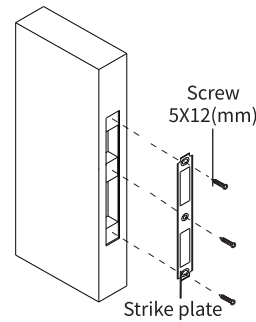


Installation steps

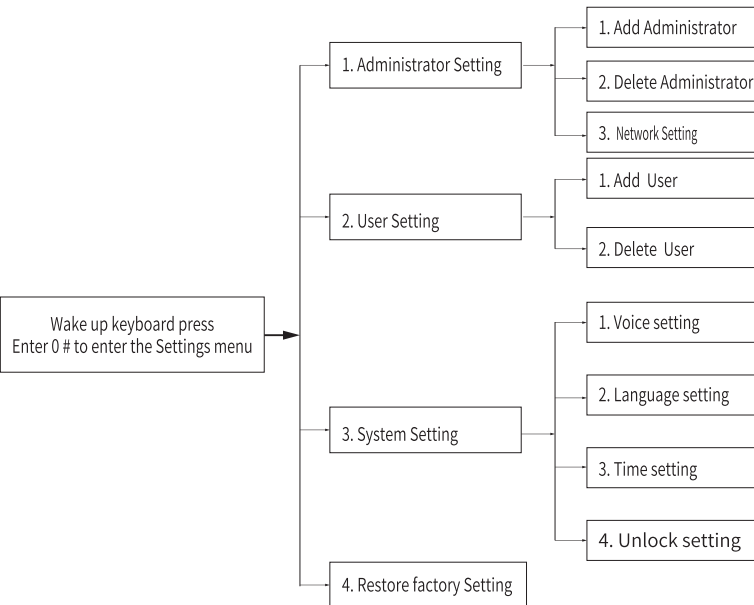
4. Install batteries



5. Install Strike plate&Strike box



Menu structure



Precautions before operating the smart lock

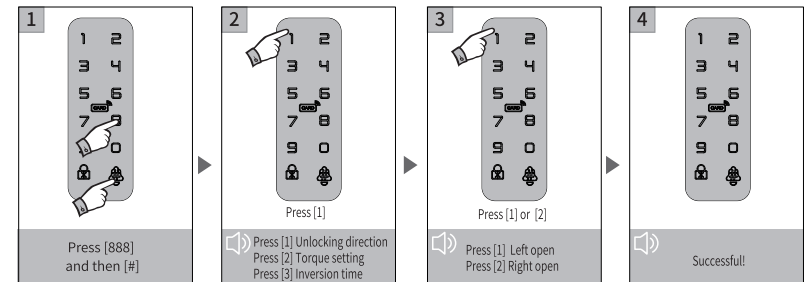
1. Terms, function key descriptions

- 1) Administrator information: refers to the administrator's face, fingerprint, password or IC card.
- 2) Unlocking information: refers to the face, fingerprint, password or IC card of ordinary users.
- 3) "*" key: clear key or lock key.
- 4) "#" key: Confirm key or doorbell key.
- 5) Back lock time: After unlocking, inclined tongue rebound time.
- 6) Combination unlock: two different users can only be unlocked after verification.

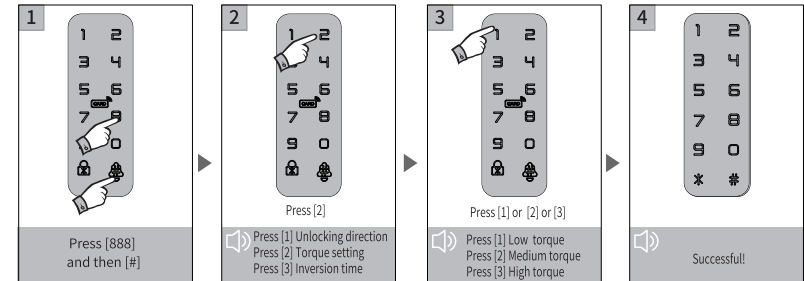
2. Initialization state

- 1) Long press the back lock "lock key" for 6 seconds, and enter "000#" on the keyboard to restore factory Settings.
- 2) The initial password of the factory administrator is "123456", and any face, fingerprint, password or IC card can be unlocked in the initial state.
- 3) After the administrator information is entered, the face, fingerprint, password or IC card that is not entered cannot be unlocked.
- 4) In the initial state, enter 888# to enter factory Settings.
- 5) The administrator can be a face/password/fingerprint /IC card, you can set according to your own requirements, a total of 9 administrators.
- 6) Press the # key to confirm, press * to return to the previous step, if there is no operation within 20 seconds, the lock will exit the setting.
- 7) Unlocking fails 5 times within 2 minutes, and the system is locked for 60 seconds, during which there is no response to any operation.
- 8) Password anti-snooping function: Enter the password as follows when opening the password :XXX password XXX; You can add some irrelevant codes before and after the password, then press # to confirm. The password must be included in the input.
- 9) After the voltage is lower than 6.8V, the lock will automatically alarm each time, be sure to charge as soon as possible.
- 10) In the factory state, input 333666999# can quickly switch between Chinese and English.

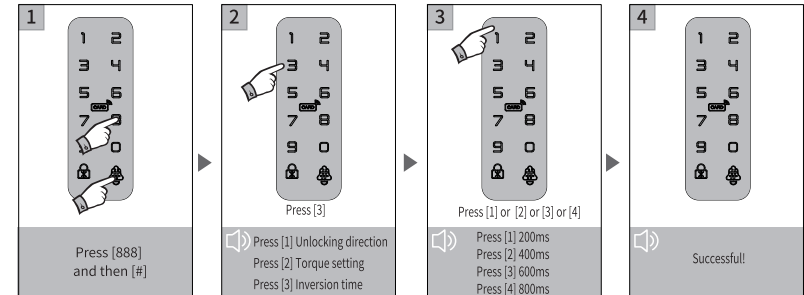
3.Unlocking direction



4.Torque setting

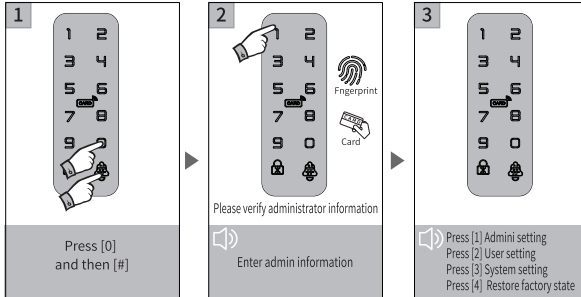


5.Reverse time



Smart lock operation

1. Enter function management (step 1)

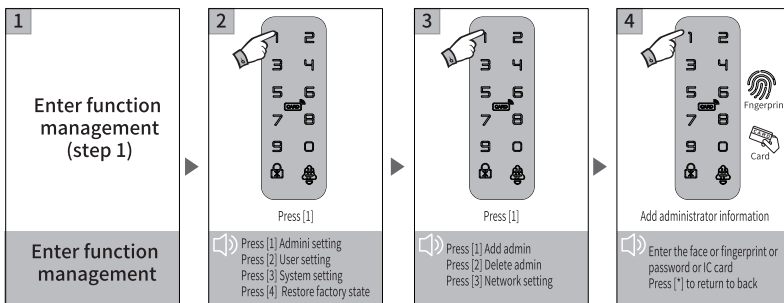


Note:

The initial password of the administrator is 123456.

2. Administrator setting (step 2)

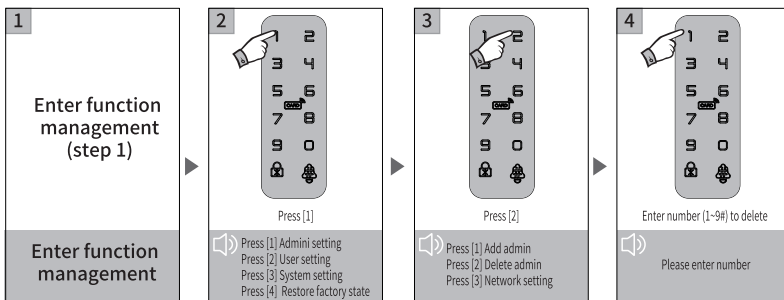
2.1 Add administrator information



Note:

- 1) Add the administrator according to [1], and automatically enter the face operation without operation in 4 seconds.
- 2) Face enters 5 directions, fingerprint entry 4 times, password entry 4-10 digits twice, and IC card entry once.

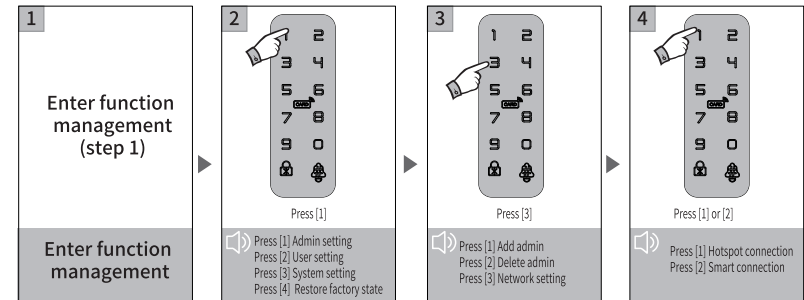
2.2 Delete administrator information



Note: The administrator entering the menu cannot be deleted.

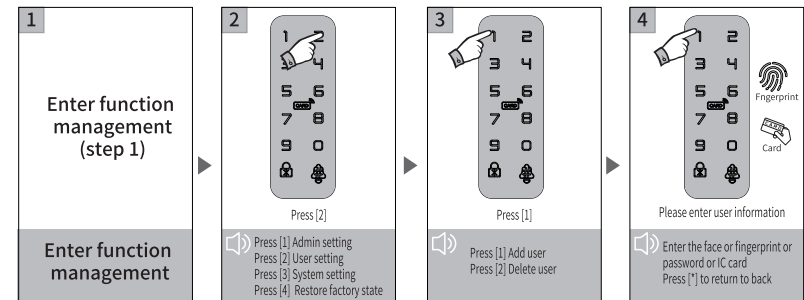
Smart lock operation

2.3 Network setting



3. Normal user setting (step 3)

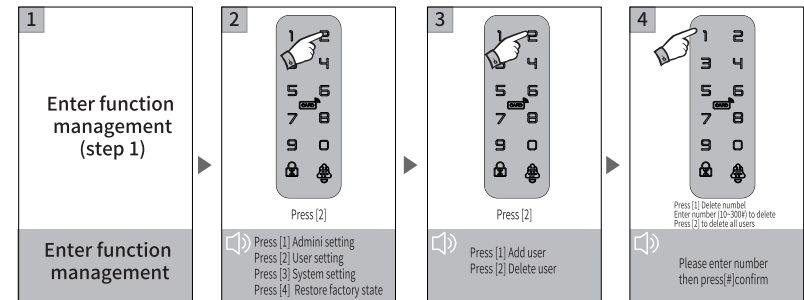
3.1 Add normal user information



Note:

- 1) After pressing "1", no operation in 4 seconds, automatically enter the add face operation
- 2) Face enters 5 directions, fingerprint entry 4 times, password entry 4-10 digits twice, and IC card entry once.
- 3) The entry is successful, and then you can continue to enter other users

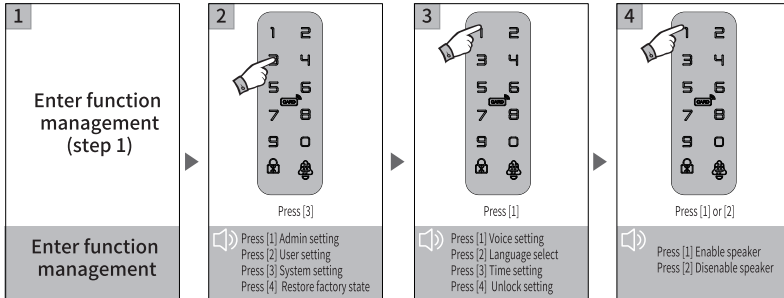
3.1 Delete normal user information



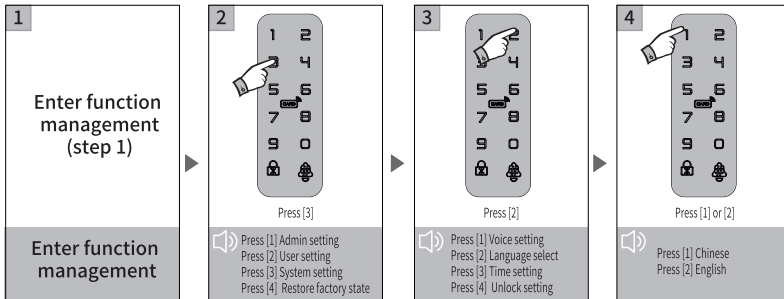
Smart lock operation

4. System setting (step 4)

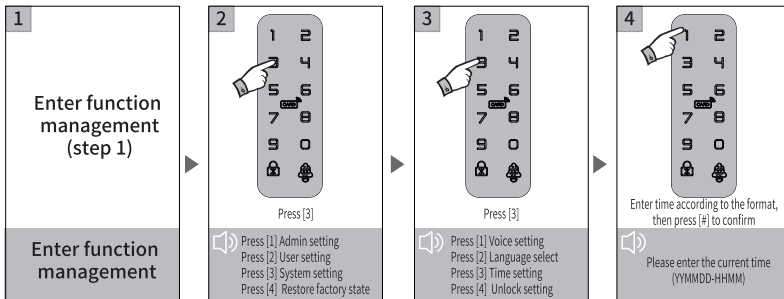
4.1 Voice setting



4.2 Language setting



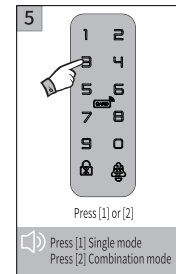
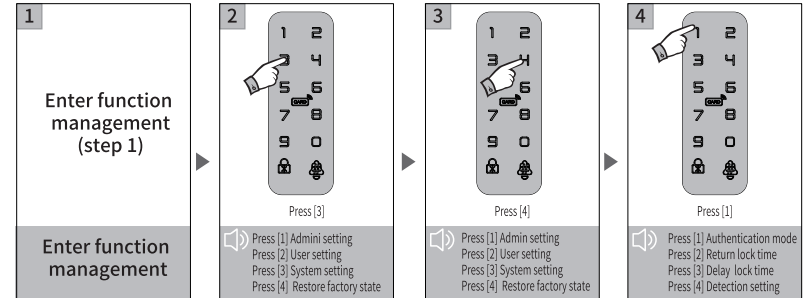
4.3 Time setting



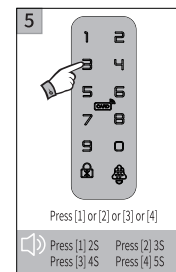
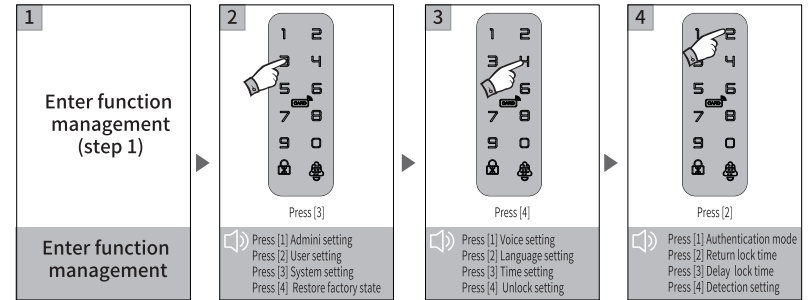
Smart lock operation

5. Unlock setting (step 5)

5.1 Verification mode



5.2 Return lock time setting



Smart lock operation

5.3 Delay lock setting

1

Enter function management (step 1)

Enter function management

2

Press [3]

Press [1] Admini setting
Press [2] User setting
Press [3] System setting
Press [4] Restore factory state

3

Press [4]

Press [1] Voice setting
Press [2] Language select
Press [3] Time setting
Press [4] Unlock setting

4

Press [3]

Press [1] Authentication mode
Press [2] Return lock time
Press [3] Delay lock time
Press [4] Detection setting

5

Press [1] or [2] or [3] or [4]

Press [1] close Press [2] 5S
Press [3] 10S Press [4] 15S

5.4 Detection setting

1

Enter function management (step 1)

Enter function management

2

Press [3]

Press [1] Admini setting
Press [2] User setting
Press [3] System setting
Press [4] Restore factory state

3

Press [4]

Press [1] Voice setting
Press [2] Language select
Press [3] Time setting
Press [4] Unlock setting

4

Press [4]

Press [1] Authentication mode
Press [2] Return lock time
Press [3] Delay lock time
Press [4] Detection setting

5

Press [1] or [2]

Press [1] Open
Press [2] Close

Smart lock operation

5. Restore factory setting

1

Enter function management (step 1)

Enter function management

2

Press [4]

Press [1] Admini setting
Press [2] User setting
Press [3] System setting
Press [4] Restore factory state

3

Please verify administrator information

Enter admin information

3

Press [*] to exit
Press [#] to confirm

Zigbee Configuration (Optional Tuya Zigbee)

- 1) Add an administrator (if added, skip it);
- 2) Search "Smart Life" in the App store or APP store to download the app and install it.
- 3) Register and log in with your mobile number.
- 4) Add a gateway according to the gateway operation instructions;
- 5) Press the "Smart Life" interface to find the security sensor, record the "Door lock Zigbee", click and complete the device addition and use as prompted: (You can also add a door lock by adding a child device under the gateway interface)
- 6) Add a network:
 - a. Press 0# to verify the administrator, press 1 to enter the administrator Settings, and press 3 to configure the network for voice broadcasting
 - b. Voice announcement: "Operation succeeded" when the addition is successful; Voice broadcast "Add failed" after timeout;
- 7) Remote unlocking: Enter the correct password on the door lock interface to confirm;

Add remote control (optional)

- 1) Add an administrator (if added, please skip it):
- 2) Add remote press, please refer to add common users.
- 3) Press any button on the remote control to indicate successful operation

Tuya APP operation (optional function)

1. Download the Tuya APP

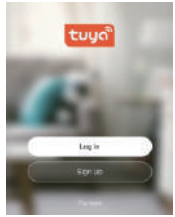
Please download Tuya Smart or Smart Life from the Apple Store or App Market,
You can also scan the QR code on the right to download the APP directly.



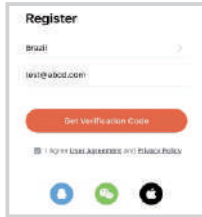
Tuya APP operation (optional function)

2. Register an account.

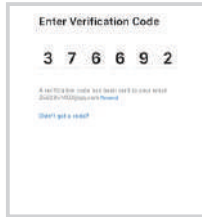
Please use your email or mobile phone number to register an account.



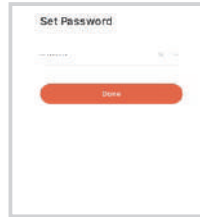
1) Sign up



2) Register with email or mobile phone number to get verification code

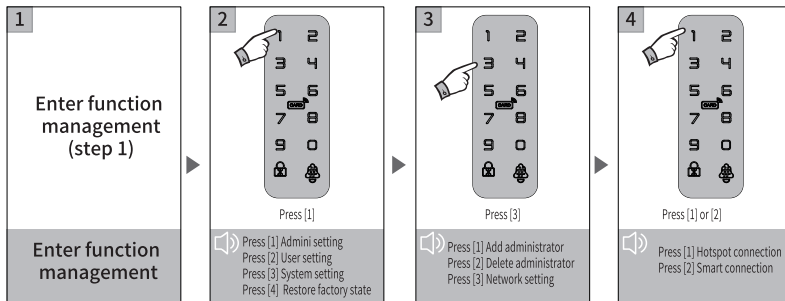


3) Fill in the verification code



4) Set the password to complete the registration

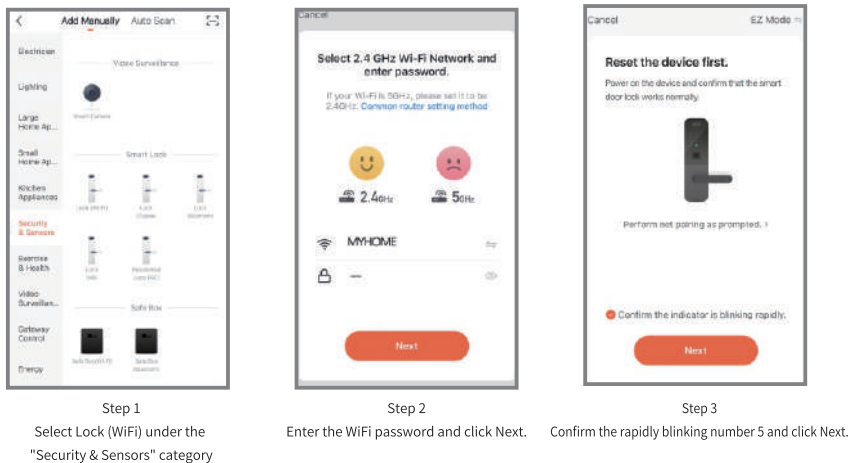
3. Network Settings



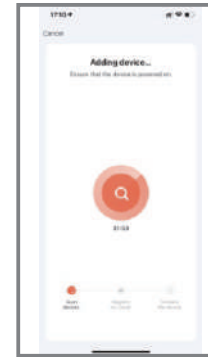
Note: There are two connection modes under this manual: hotspot connection, Smart connection.

4. Intelligent Connection (EZ mode)

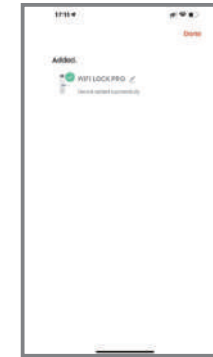
Please open the Tuya Smart APP and select WiFi lock under "Security and Sensors". Please ensure that the privacy button is unlocked. If it is locked, WiFi connection cannot be configured.



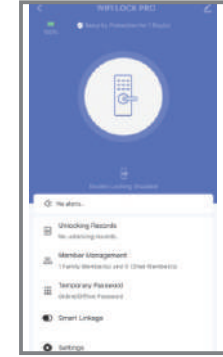
Tuya APP operation (optional function)



Step 4
Scanning equipment



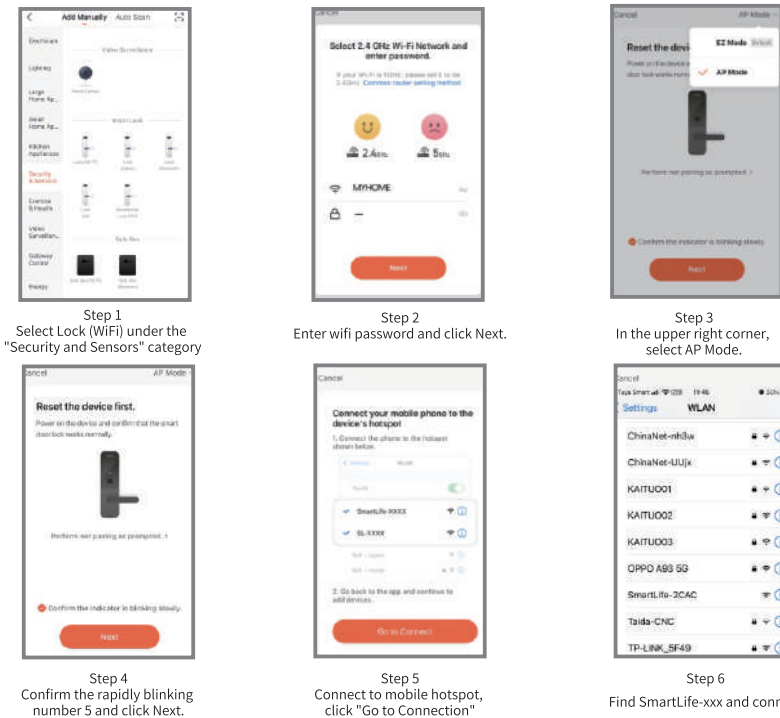
Step 5
Adding a device succeeds



Step 6
Interface to edit the name of the lock

5. Hotspot Connection (AP mode)

Please open the Tuya Smart APP and select wifi lock under "Security and Sensor". Please ensure that the privacy button is unlocked. If it is locked, wifi connection cannot be configured.



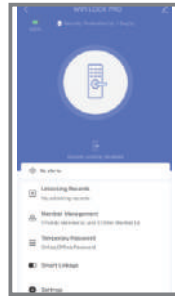
Tuya APP operation (optional function)



Step 7
Scanning equipment



Step 8
Adding a device succeeds



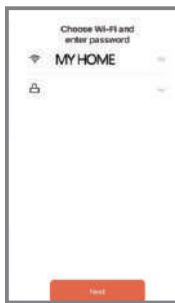
Step 9
You can edit the lock name

6. BLE Quick connection (Valid for dual mode modules only)

This is an additional form of BLE connection. This operation should be performed in AP or EZ mode state (5 blinking). A window pops up as follows:



Step 1
The window for adding a device is displayed



Step 2
Enter the Wi-Fi password and click Next.



Step 3
Place your phone near your router and lock it to the cloud



Step 4
connection

7. Remote unlock function

When the visitor presses the doorbell key, there is a remote unlock request in the App and video intercom, you can press "agree to unlock" or "refuse to unlock" to cancel the operation.

